

# LEDinspect HEADTORCH250

## Inspectionlights



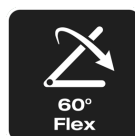
### Motion Sensor Activation

Easily control light during hands free use



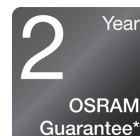
### 250 Lumen

Two light functionsHigh: Up to 250 lmLow: Up to 140 lm



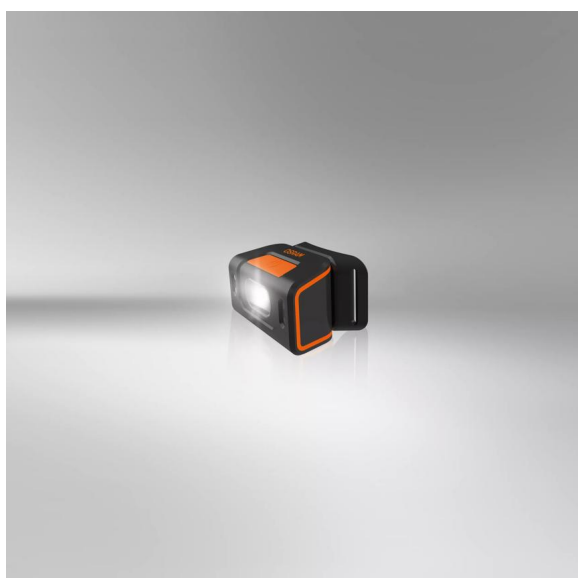
### 60° Flex

Adjustable light angle to get the light to the desired position



### 2-year-OSRAM guarantee\*

Systematic quality assurance measures underpin the premium workmanship and functionality of our products. Innovative technology and excellent quality really pay dividends for our customers.



### Light is versatile

This high-quality headtorch from OSRAM is perfect for professional and private use. With two light functions - high up to 250lm and low up to 140lm, there is a light output to suit a wide variety of tasks. The integrated motion sensor technology allows for hassle-free, hands-free working and the option for the 60° tilt angle provides flexibility to give light where needed. The rechargeable battery allows up to 3.5h of operation at high power or up to 6h at low power. A USB Type-C charging cable and the corresponding power adaptor are included in the scope of supply. In accordance with IP54 protection rating, this headtorch has protection against ingress of particles and against splashing water and



is tested for impact resistance in accordance with IK08. The LEDinspect HEADTORCH 250 has soft pads inside and additionally an adjustable strap for optimal wearing comfort and is therefore ideal as a light for craft activities, car repairs and in everyday life. In addition, OSRAM grants a 2-year guarantee\*

Product family datasheet

Technical data

	Product information		General Product Information	Electrical Data	
Product description	Application (Category and Product specific)		Global order reference	Nominal voltage	Nominal wattage
INSPECTION LAMP	LED inspection lights		LEDIL404	3.7 V	5 W
	Photometric Data				Physical Attributes & Dimensions
Product description	Light color LED	Nominal luminous flux	Color temperature		Height
INSPECTION LAMP	White	250 lm	5700 K		45.0 mm
					LED module information
Product description	Width	Length	Product weight		Number of LEDs per module
INSPECTION LAMP	42.0 mm	67.0 mm	105.00 g		1
	Colors & materials		Lifetime Data	Additional product data	
Product description	Base color		Guarantee	Scope of battery	Number of included batteries
INSPECTION LAMP	Black / Orange		2 years	Yes	1
			Capabilities	Certificates & standards	Logistical data
Product description	Type of Battery		Technology	IK Class	Watt hour per battery
INSPECTION LAMP	Rechargeable		LED	IK08	16.70
	Environmental & Regulatory Information Information according Art. 33 of EU Regulation (EC) 1907/2006 (REACH)				
Product description	Candidate list substance 1	CAS No. of substance 1	Safe use instruction		Declaration no. in SCIP database
INSPECTION LAMP	Lead	7439-92-1	The identification of the Candidate List substance is sufficient to allow safe use of the article.		bdeca20c-87d7-47fc-a8d4-ed431387b196

Download Data

File	
	User instruction LEDinspect HEADTORCH 250
	User instruction GPRS_Safety symbols instructions

Legal advice

Application advice:

For more detailed application information and graphics please see product datasheet and user instruction.\*for precise conditions please refer to:

[www.osram.com/am-guarantee](http://www.osram.com/am-guarantee)

Application advice

For more detailed application information and graphics please see product datasheet.

Disclaimer

Subject to change without notice. Errors and omission excepted. Always make sure to use the most recent release.